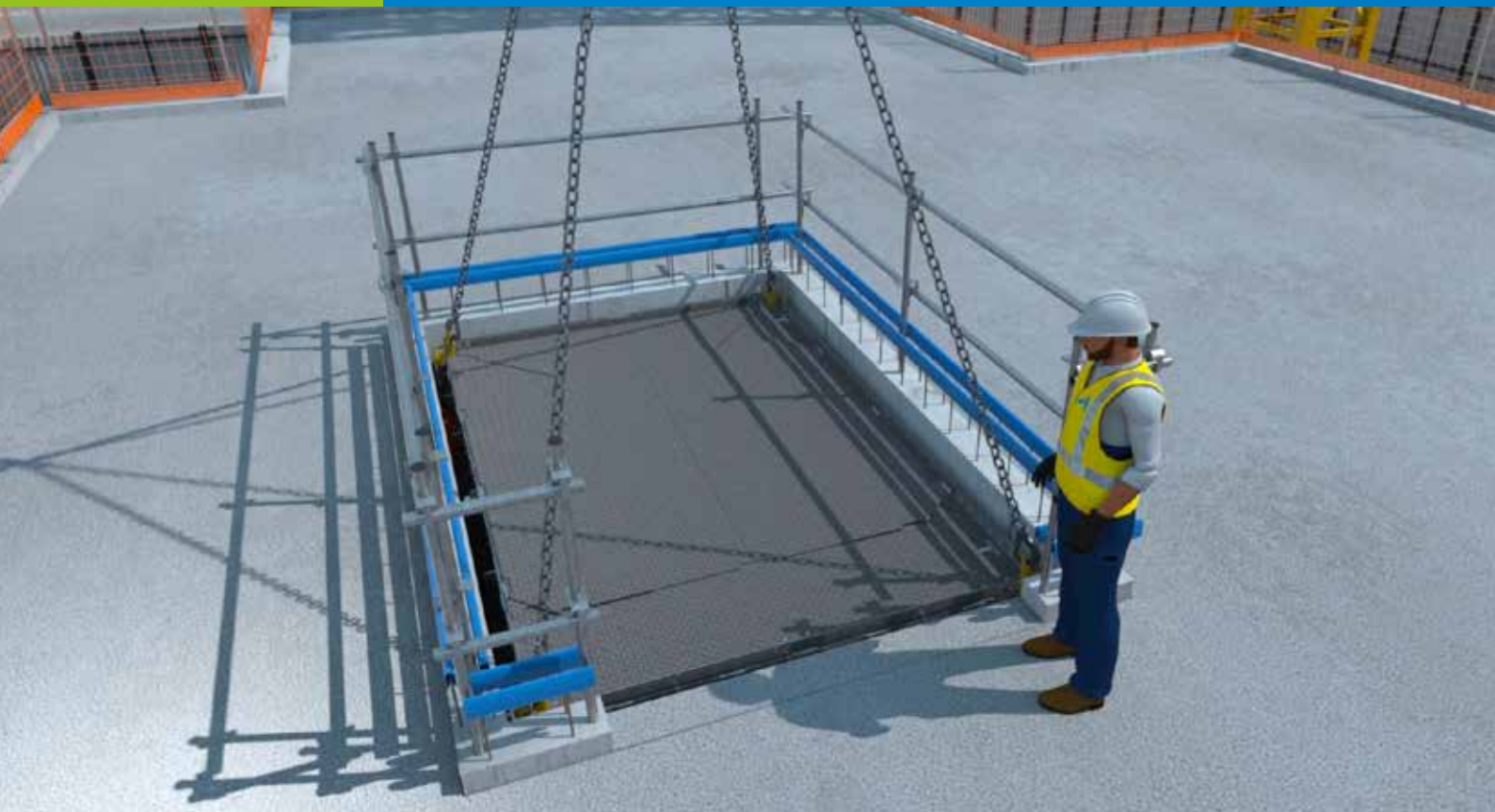


Podium

SAFETY



MODULARITY

|

PRODUCTIVITY

|

DURABILITY

|

SIMPLICITY

THE ADJUSTABLE
SAFETY PLATFORM

Podium | The adjustable safety platform



Podium

The Podium is a **safety platform with adjustable dimensions** for temporarily filling the various shafts in buildings: for lifts, goods lifts, technical ducts, stairwells, etc.

This extendable platform is designed to **adapt to the size of the shaft** in order to hold the vertical formwork used to produce skins.

The range is made up of different modules and supports, satisfying **all worksite constraints**. Made of galvanised steel, the Podium is **reusable**.

The Podium's size is **quickly and easily** adjusted using a central nut positioned on each side.

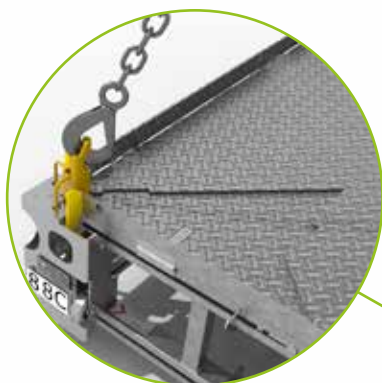
The AlphiSafe collective safety system can be fitted to the Podium.



Podium | The adjustable safety platform

SAFETY

- Lifting side panels provide an **out-side view** of the proper positioning of the Podium on its supports.
- Retractable stands for secure transportation.



Lifting side panel

PRODUCTIVITY

- Adjustable dimensions enabling equipment to be **reused and optimised**.
- Quick and easy installation thanks to the Podium's **built-in gauges**.
- Wheels for easy adjustment and movement.
- Marked for **immediate identification** in procedural drawings and on the worksite.

SIMPLICITY

- Form panel wrench-compatible nut for adjusting the Podium's size.
- Rollers guiding the Podium inside the shaft.
- Can be handled with a forklift or crane thanks to the lifting rings.



Rollers for positioning in the shaft and lifting rings



Marking

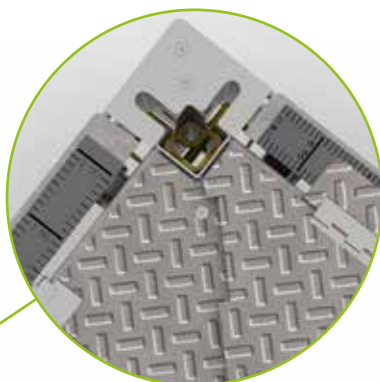


Wheel for easy adjustment and movement

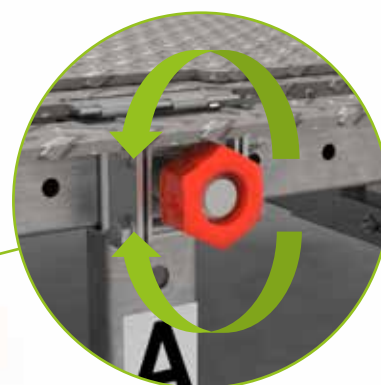


DURABILITY

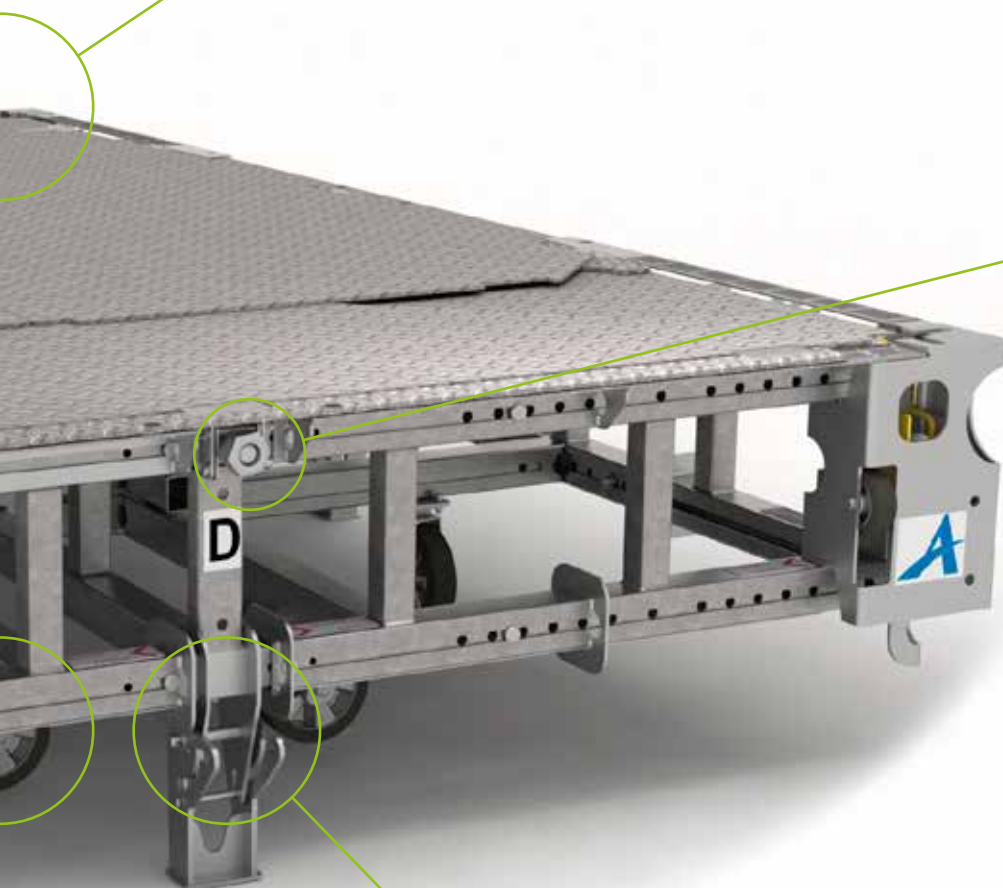
MADE OF GALVANISED STEEL, THE PODIUM IS STURDY AND REUSABLE.



Gauges simplifying and making adjustment easier



Form-panel wrench compatible nut for adjusting the size




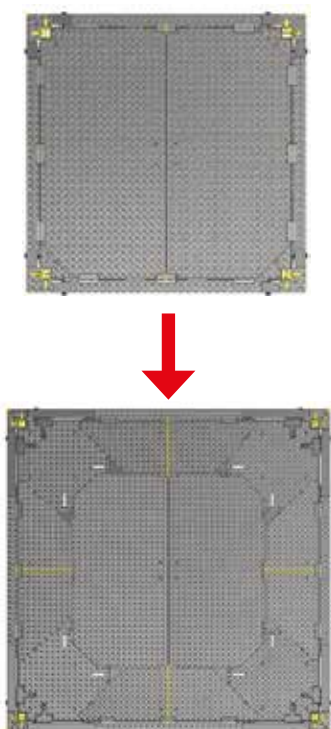
MODULARITY

DIFFERENT DIMENSIONS FOR ALL SHAFT SIZES.
CONTINUOUS ADJUSTMENT TO THE NEAREST MILLIMETRE.



Retractable stands




COMPONENTS


	Podium	Cat. No.	Dimensions (m)		Unit weight (kg)
			l x w min	l x w max	
Platforms		PODIUM 168-248	1.68 x 2.48	2.48 x 3.73	1100.00
		PODIUM 248-248	2.48 x 2.48	3.73 x 3.73	1455.00
		PODIUM 248-333	2.48 x 3.33	3.73 x 4.98	1820.00
		PODIUM 128-128	1.28 x 1.28	1.78 x 1.78	570.00
		PODIUM 128-168	1.28 x 1.68	1.78 x 2.48	780.00
		PODIUM 168-168	1.68 x 1.68	2.48 x 2.48	825.00

ACCESSORIES

Mounting equipment	Clapper	Cat. No.	Weight (kg)	Description
		POD-CLAP	13.0	<ul style="list-style-type: none"> Podium support Mounted on the skin before positioning the Podium Reserved area or Ø32 bore MWL = 17 kN
	Ratchet	Cat. No.	Weight (kg)	Description
		POD-ROCHET	25.0	<ul style="list-style-type: none"> Podium support Mounted on the Podium Reserved area to be provided beforehand Stand can be used for transportation MWL = 25 kN
	Flywheel attachment	Cat. No.	Weight (kg)	Description
		SUPOD	12.00	<ul style="list-style-type: none"> Safely fitted and released from inside the building MWL = 50 kN
	Magnetic reserved area	Cat. No.	Description	
		POD-RESA	<ul style="list-style-type: none"> Magnet to be positioned on vertical formwork to leave a reserved area to support the ratchet 	

ACCESSORIES

Safety	Mesh	Cat. No.	Dimensions w x h [m]	Weight [kg]	Description
		ALPHISAFE 1M25	1.25 x 1.30	7.60	<ul style="list-style-type: none">The wire mesh is galvanised and coated with polyester powderCompliant with standard EN 13374
		ALPHISAFE 2M50	2.50 x 1.30	14.50	
	Galvanised post	Cat. No.	Cross-section [cm]	Height [m]	Unit weight [kg]
		POT ALPHISAFE TOPTAB	3.5 x 3.5	1.34	4.20
	AlphiSafe adapter	Cat. No.	Weight [kg]		
	AD-POD-ALPHISAFE	1.0			

Additional	Preparation sheet	Description
		<ul style="list-style-type: none">Worksite configuration sheet specifying the mounting method and the associated safety devices

USER GUIDE: PODIUM PREPARATION

UNLOADING



- Sling the Podium using the 4 retractable lifting hooks.



- Retract the transport stands.



- Place the Podium on the ground on its wheels.



- A nut on each side of the Podium allows the size to be adjusted.



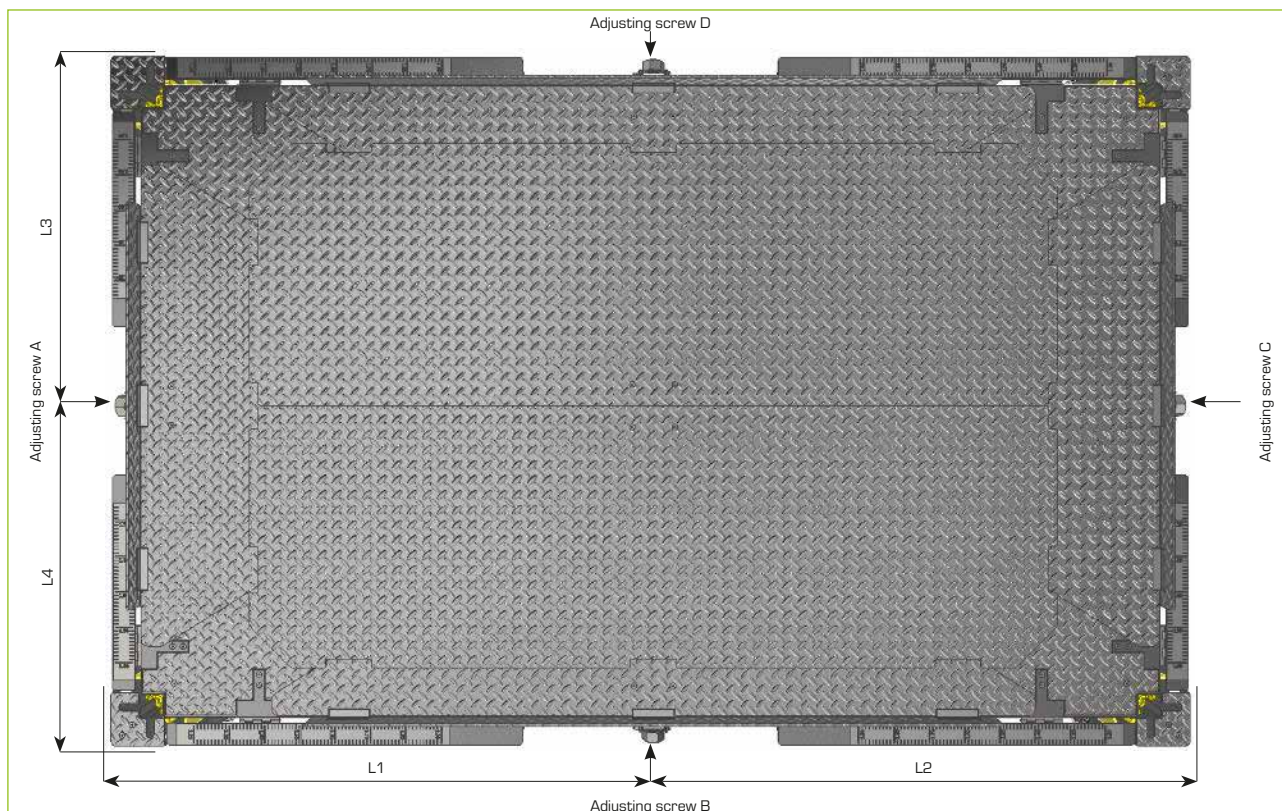
- Adjust the size as required (detailed procedure on the following page).



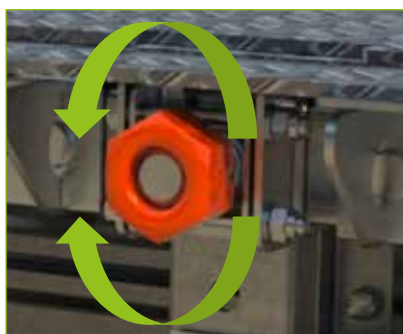
- Sling the Podium for positioning in the shaft.

USER GUIDE: PODIUM PREPARATION

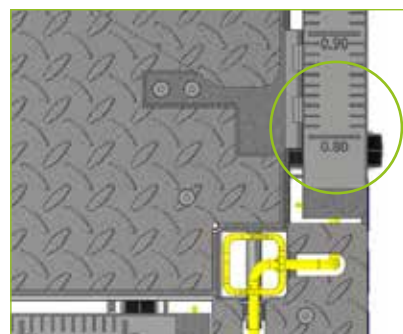
SIZE ADJUSTMENT



- Stand in retracted position.



- The length is adjusted by tightening/loosening the adjusting screws.
- The Podium rests on its wheels during this operation, therefore, the transport stand must be retracted.



- The length is adjusted with the aid of built-in gauges.



- Adjusting screw (HM36 nut).

Adjusting screw	Length adjustment
A	L1
B	L4
C	L2
D	L3

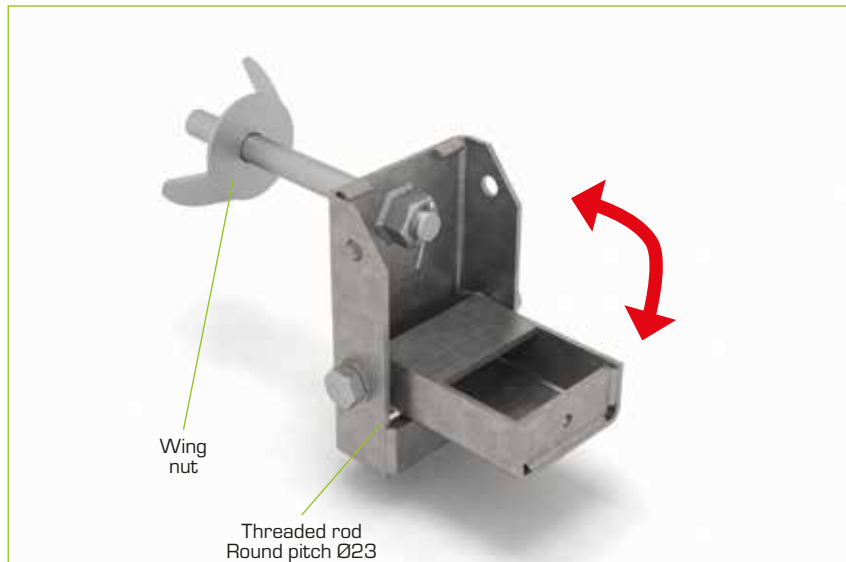
USER GUIDE: CHOICE OF MOUNTINGS

There are two systems for mounting the Podium in the shaft: using clappers or ratchets.

CLAPPERS

The clapper is a support for holding the Podium.

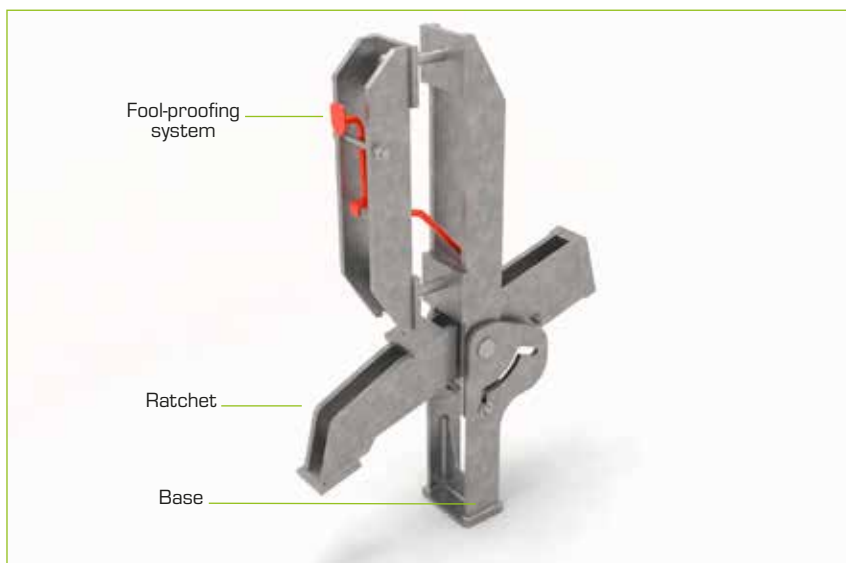
- It is fitted prior to positioning the Podium and then operates automatically.
- CMU = 17 kN



RATCHETS

The ratchet is secured to the Podium. A reserved area must be provided beforehand in the skin.

- Firstly, the fool-proofing system is used to lower the Podium into the cage, without human intervention, to lock the ratchets.
- Secondly, it can be used to check that the ratchets are positioned correctly in the reserved areas.
- The stand prevents the ratchet from being crushed.
- CMU = 25 kN



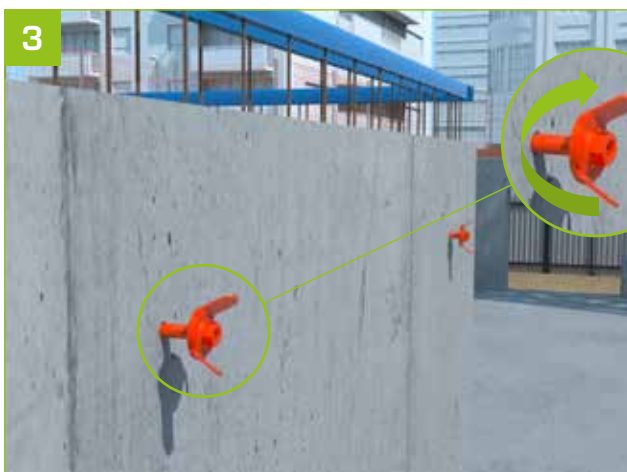
USER GUIDE: ASSEMBLY WITH CLAPPERS



- The Podium is positioned in the shaft.



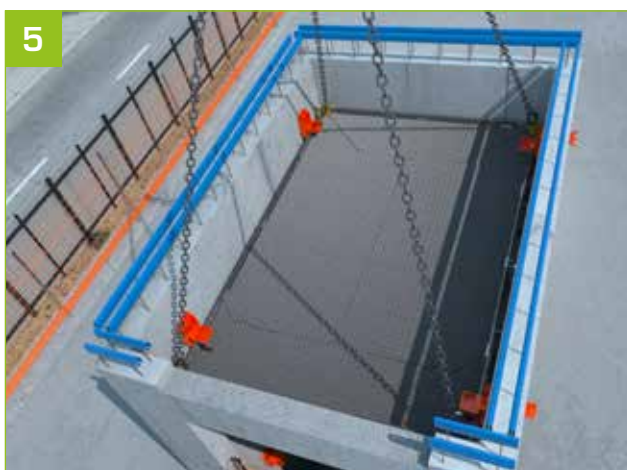
- The clappers are inserted into the reserved areas from inside the cage.



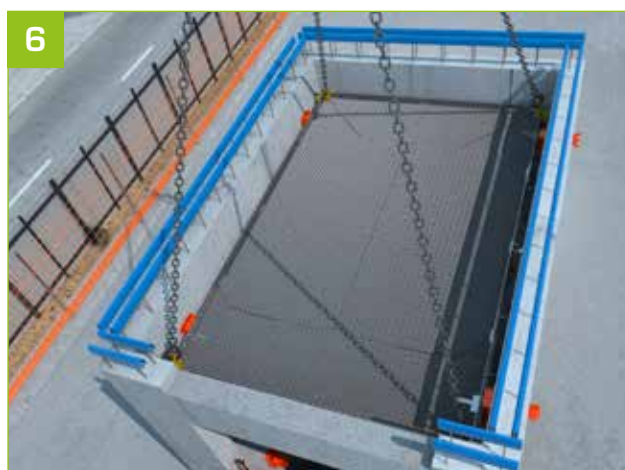
- A wing nut is fastened on the other side of the skin to clamp and lock each clapper.



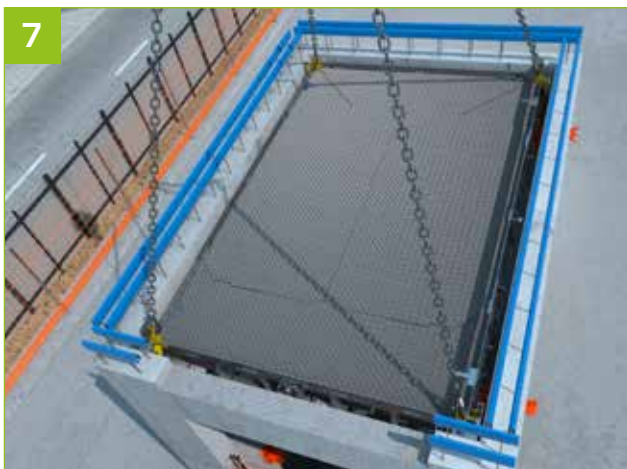
- The Podium is lifted using a crane.
- The side panels lift automatically.



- Passing the clappers.



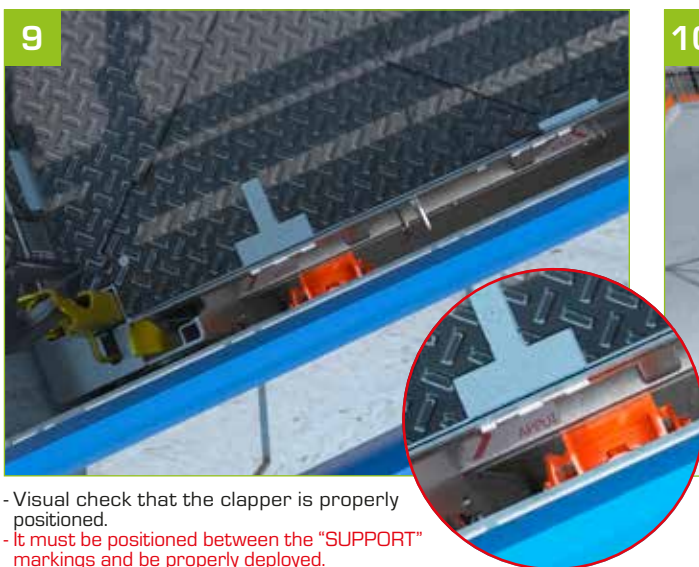
- The clappers retract when the Podium passes.



- The clappers open out automatically and the Podium passes over them.



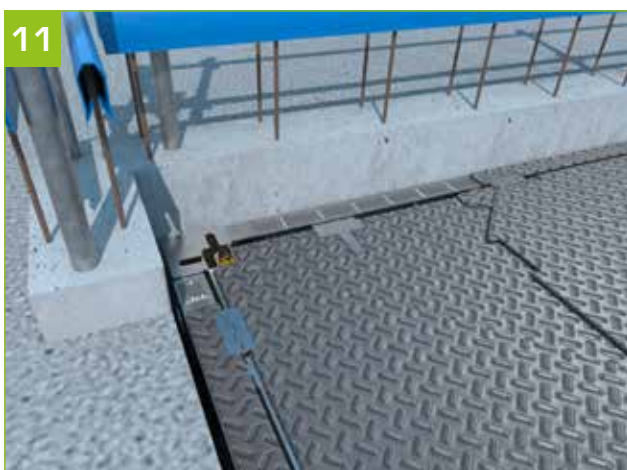
- Place the Podium on its bottom profile.



- Visual check that the clapper is properly positioned.
- It must be positioned between the "SUPPORT" markings and be properly deployed.



- Remove the slings.



- The lifting hooks retract and the panels are lowered automatically.



- Install the form panels.

USER GUIDE: ASSEMBLY WITH RATCHETS



1 - On the ground, place the ratchet in the locked position using the locking pin.



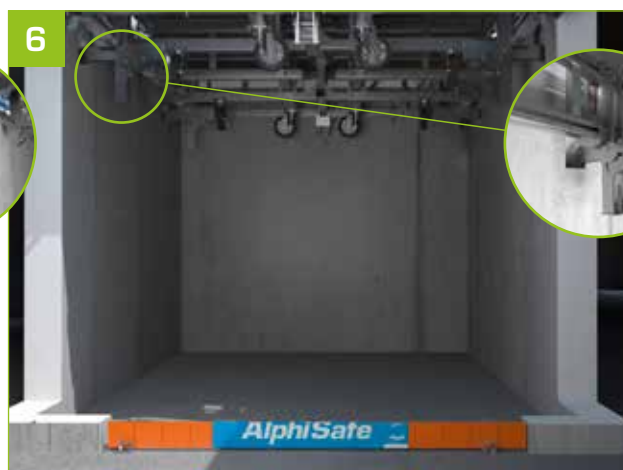
2 - Place the Podium at the bottom of the shaft to be secured.



3 - Release the ratchets.

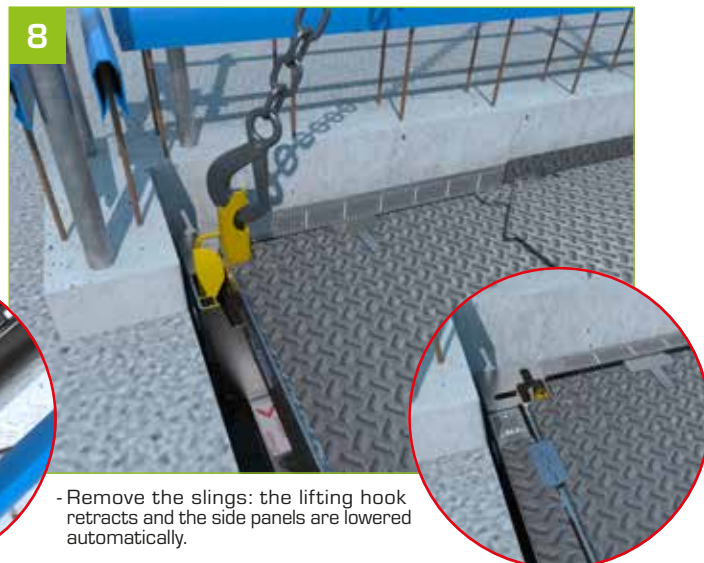


4 - Raise the Podium to fit the ratchets in the reserved areas on the walls.





- By means of the side panels that lift automatically when the Podium is slinged, check that the ratchets are positioned correctly in the reserved areas provided.



- Remove the slings: the lifting hook retracts and the side panels are lowered automatically.



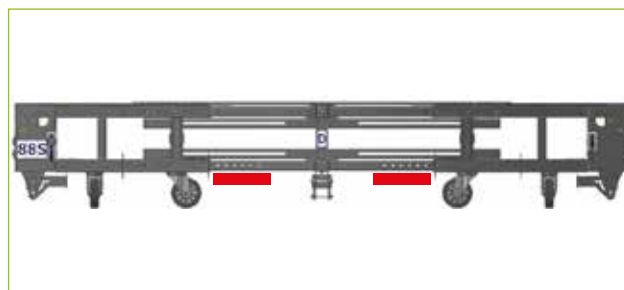
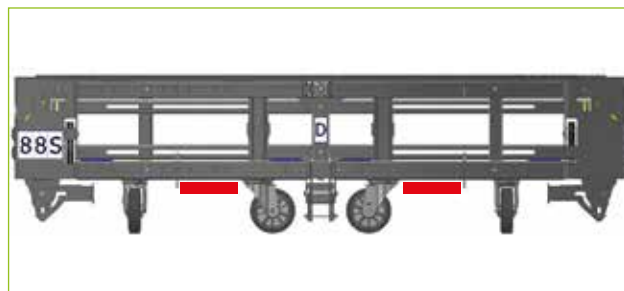
- Install the wall formwork.



- Repeat the operation for the other levels.

HANDLING

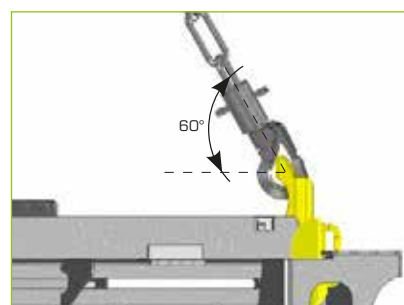
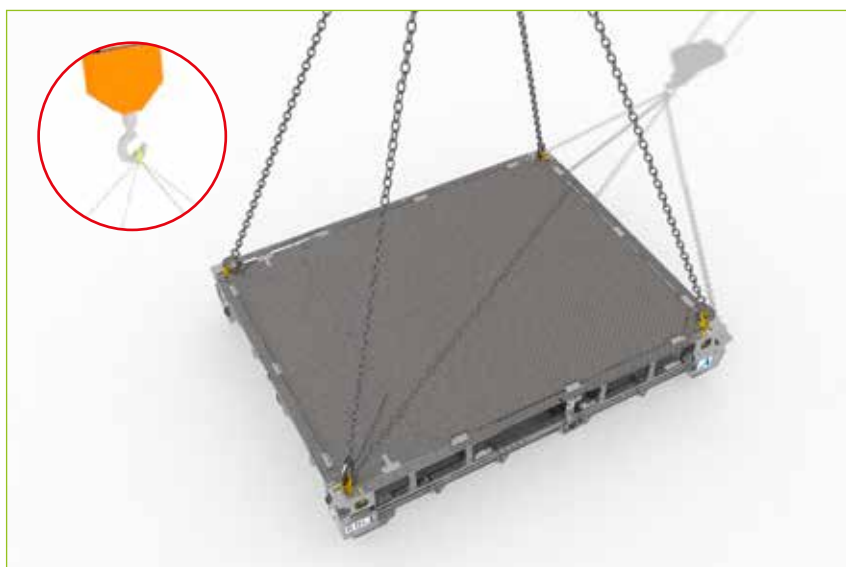
WITH A FORKLIFT



- A maximum of 3 stacked Podiums can be moved (or less depending on the forklift's load capacity).

 = Forklift pocket

WITH A CRANE



- When handling with a crane, the Podium must be slinged using its 4 lifting rings.

TRANSPORT



- Strap the first Podium tier with 2 straps per Podium.



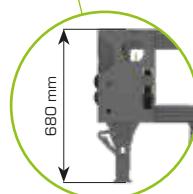
- Position the second Podium tier. If this tier is smaller, it must be centred widthwise on the lorry and aligned with the length of the Podium underneath. In this way, the strap rests on the corners of both tiers.

NB.: one strap per Podium.



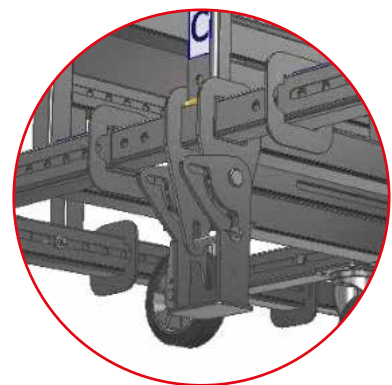
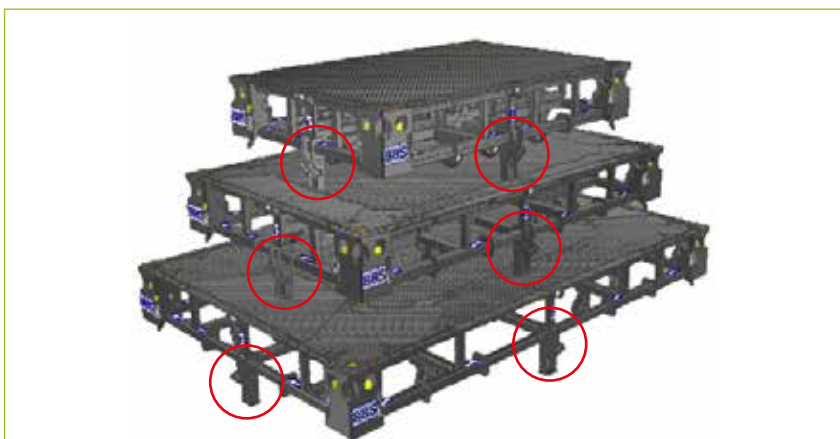
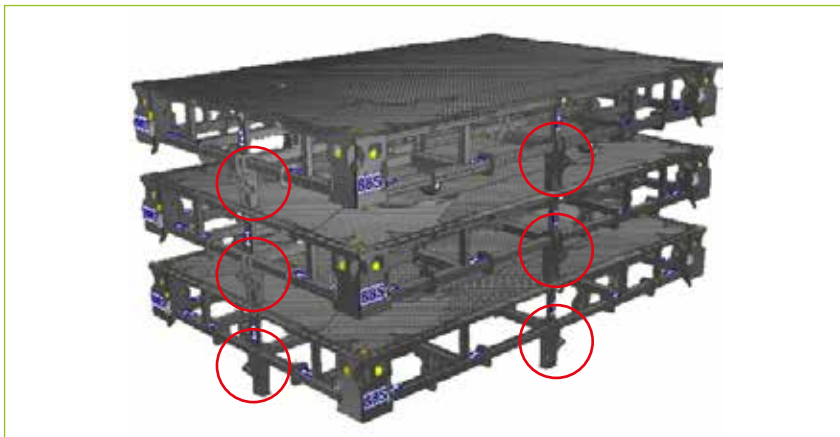
- Positioning the final tier with 2 straps per Podium (3 Podiums maximum).

NB.: ratchets and stands in the "transport" position.



STORAGE

PACKING



CAUTION: stands opened out

ALPHI, THE WORKSITE SAFETY SPECIALIST



The Podium is an adjustable safety platform. Modular and reusable, it satisfies all worksite constraints.

Head Office

Savoie Hexapole - Bâtiment A
129, rue Nicolas Copernic - 73420 Méry
Tel. +33 (0)4 79 61 85 90 - info@alphi.fr
Design department: be@alphi.fr

Paris Office

Tel. +33 (0)1 30 52 24 30 - info.paris@alphi.fr
Design Department: be.paris@alphi.fr